

Texas Academic Performance Report (TAPR) 2021-22

BOT Regular Meeting
February 28th, 2023

TAPR Overview

- The TAPR provides information on the performance of students in each school and district in Texas. The reports also provide extensive information on school and district staff, programs, and student demographics.
- All data contained within this presentation comes from the 2021-22 school year unless otherwise noted.

Enrollment by Ethnicity

District (N=23,379)

Student Group	Count	Percent
African American	3,539	15.1
Hispanic	6,787	29.0
White	10,546	45.1
American Indian	84	0.4
Asian	1,258	5.4
Pacific Islander	38	0.2
Two or More Races	1,127	4.8

State (N=5,427,320)

Student Group	Count	Percent
African American	694,302	12.8
Hispanic	2,860,754	52.7
White	1,427,241	26.3
American Indian	18,028	0.3
Asian	261,788	4.8
Pacific Islander	8,477	0.2
Two or More Races	156,780	2.9

Enrollment by Program

District (N=23,379)

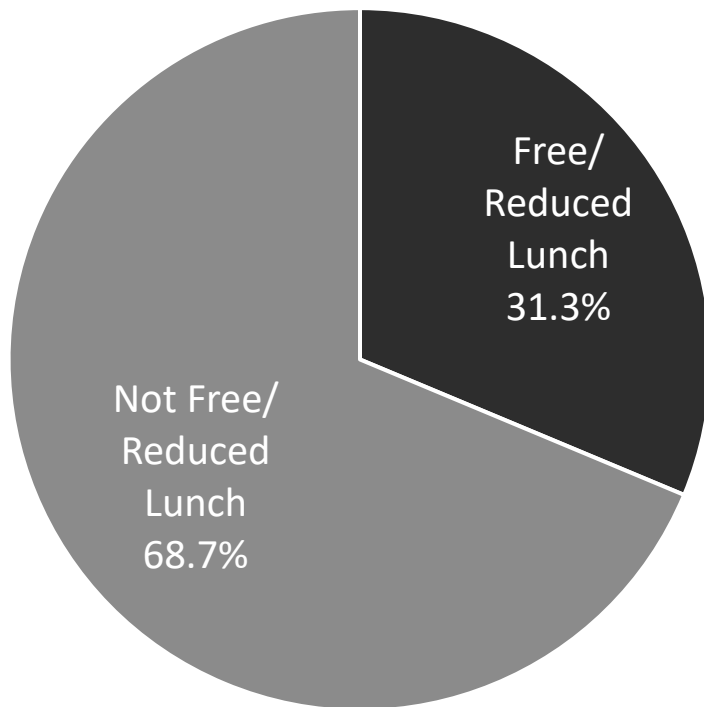
Student Group	Count	Percent
Bilingual/ESL Education	3,101	13.3
Gifted & Talented Education	2,571	11.0
Special Education	3,251	13.9

State (N=5,427,320)

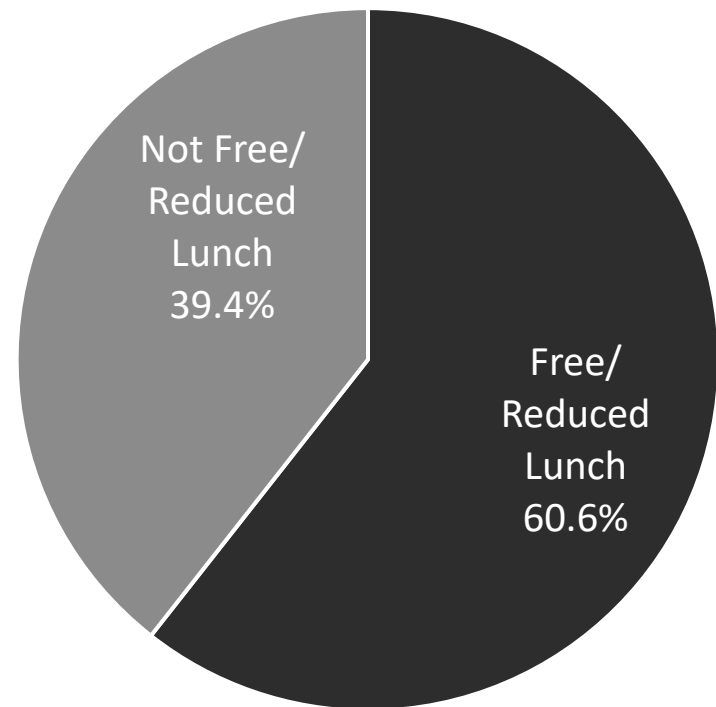
Student Group	Count	Percent
Bilingual/ESL Education	1,185,511	21.8
Gifted & Talented Education	435,356	8.0
Special Education	635,097	11.7

Enrollment by Meal Status

District



State



Staffing by Role

District (N=2,727.0)

Category	Count	Percent
Teachers	1,631.3	59.8
Professional Support	312.2	11.4
Campus Admin.	89.0	3.3
Central Admin.	45.3	1.7
Educational Aides	287.3	10.5
Auxiliary Staff	362.0	13.3

State (N=749,473.4)

Category	Count	Percent
Teachers	369,695.8	49.3
Professional Support	80,190.4	10.7
Campus Admin.	22,091.4	2.9
Central Admin.	8,654.8	1.2
Educational Aides	82,972.4	11.1
Auxiliary Staff	185,868.6	24.8

Teacher Role by Ethnicity

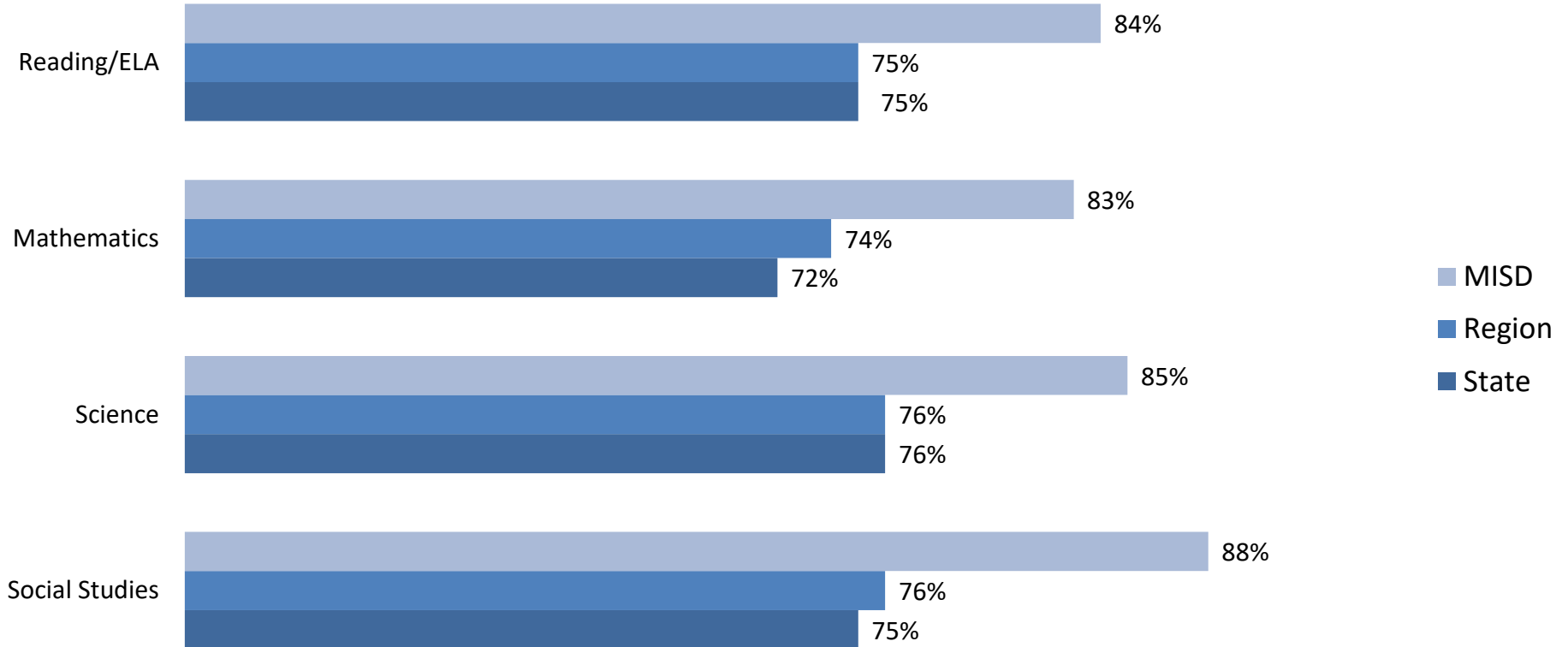
District (N=1,631.3)

Teacher Group	Count	Percent
African American	112.1	6.9
Hispanic	196.7	12.1
White	1,256.3	77.0
American Indian	9.0	0.5
Asian	27.7	1.7
Pacific Islander	6.0	0.4
Two or More Races	23.6	1.4

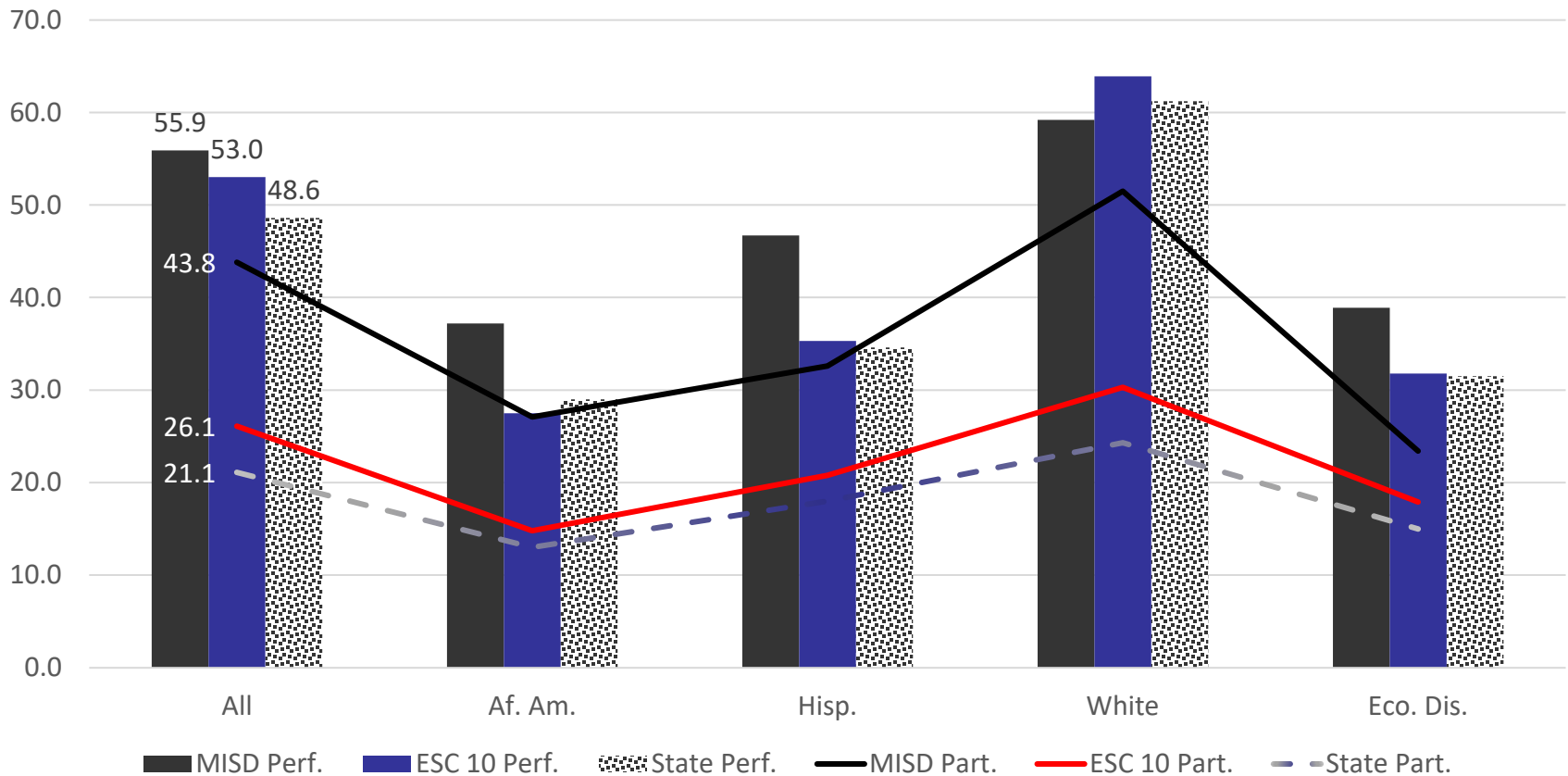
State (N=369,695.8)

Teacher Group	Count	Percent
African American	41,286.1	11.2
Hispanic	106,866.5	28.9
White	208,485.4	56.4
American Indian	1,235.6	0.3
Asian	6,956.0	1.9
Pacific Islander	553.2	0.1
Two or More Races	4,312.0	1.2

STAAR Approaches GRD LVL or Above

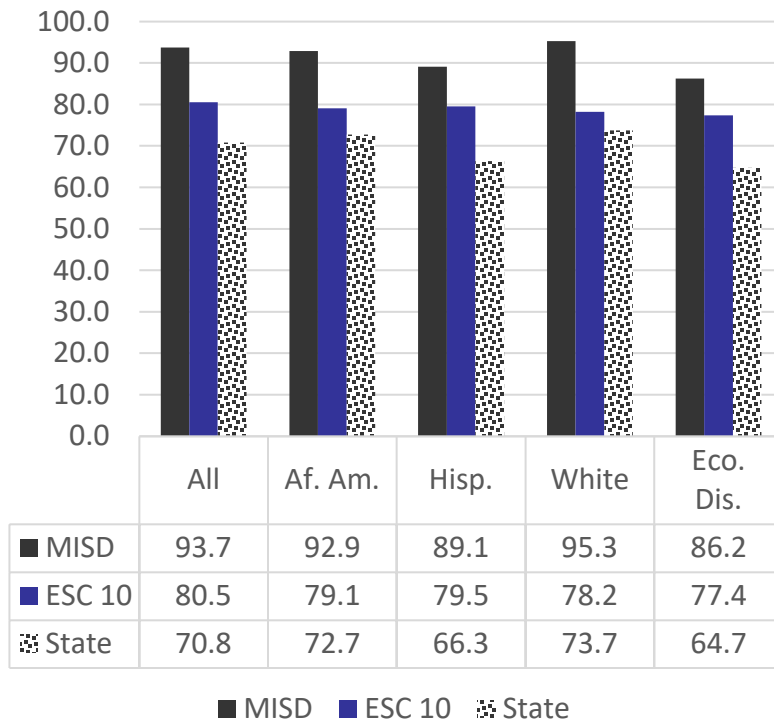


AP/IB Results: 2020-21 SY

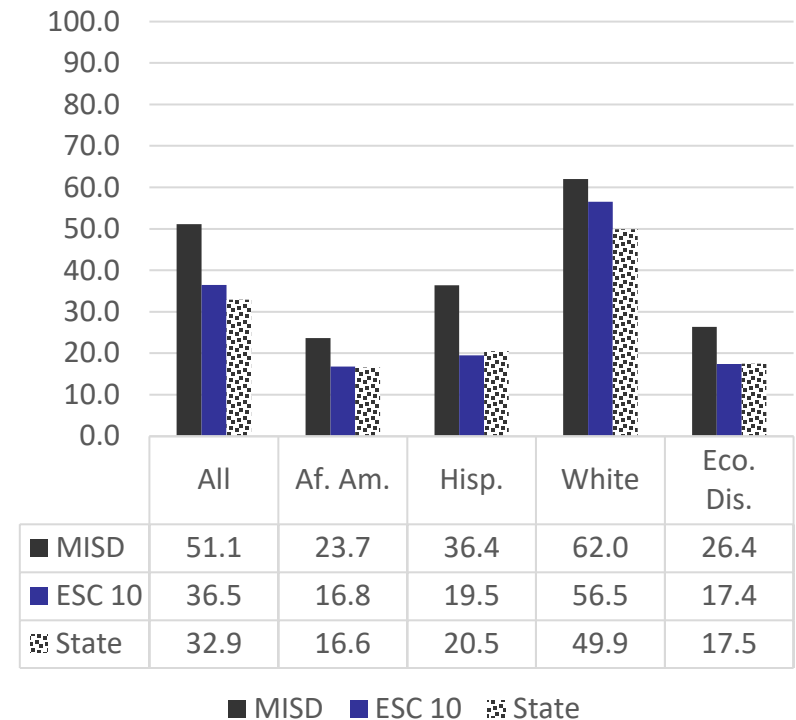


SAT/ACT Results: Class of 2021

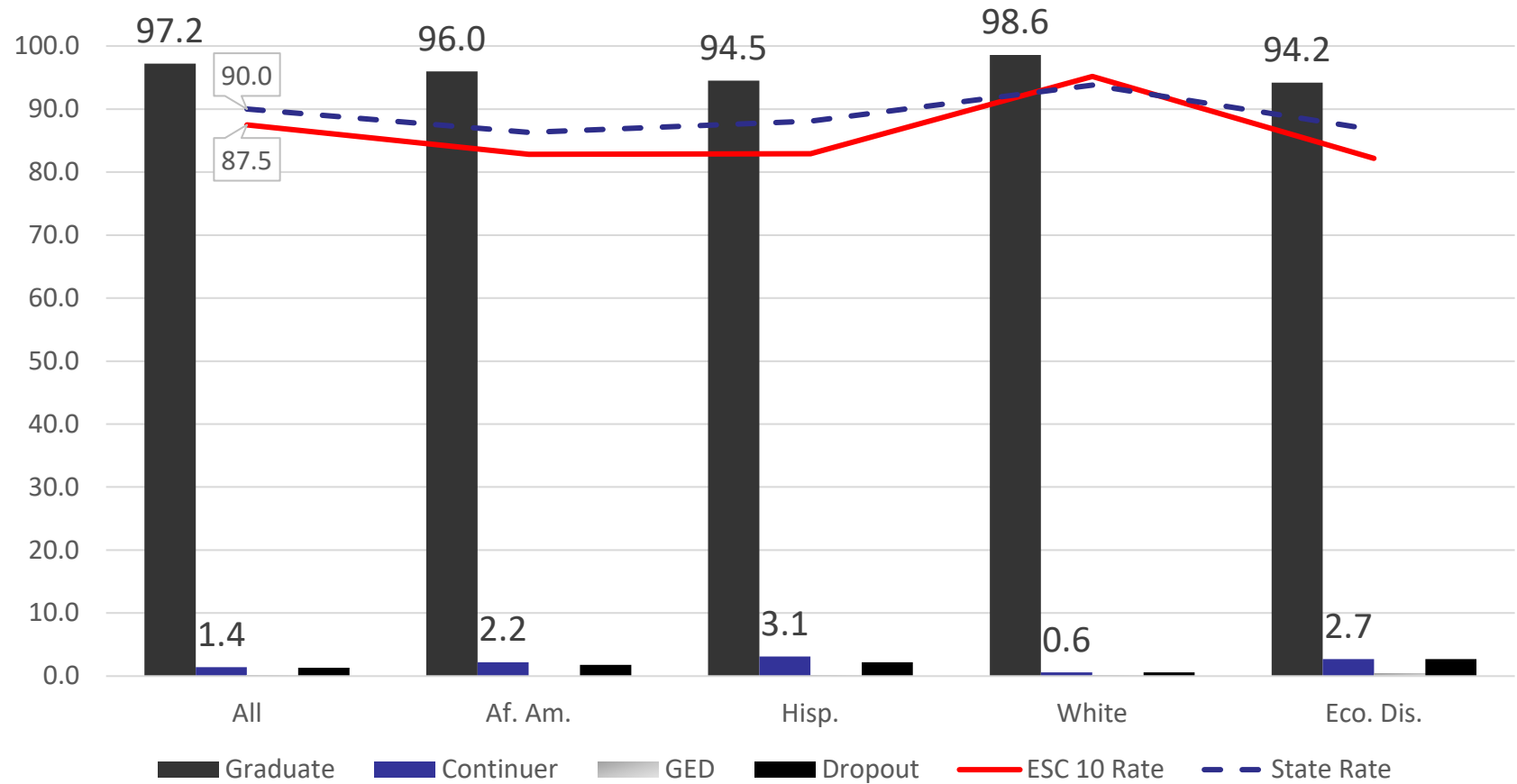
Participation



Performance



4-Year Graduation Rate: Class of 2021



Postsecondary Performance

- Texas statute requires every district to include with its TAPR a report on student performance in postsecondary institutions during the first year enrolled after graduation from high school. The report includes:
 - Number of Total Graduates, disaggregated by attendance in Institutes of Higher Education
 - Number of Students within each GPA reporting band

Postsecondary Performance (cont.)

McKinney ISD (SY 2020 HS Graduates FY 2021 HE Enrollment)	Total Graduates	GPA for 1st Year in Public Higher Education in Texas					
		<2.0	2.0-2.49	2.5-2.99	3.0-3.49	≥3.5	Unk
Four-Year Public University	362	47	18	42	78	177	0
Two-Year Public Colleges	508	177	54	63	85	110	19
Ind. Colleges & Universities	56						
Not Trackable	249						
Not Found	750						
Total HS Graduates	1,925						

Four-Year Bar Chart



Two-Year Bar Chart



Postsecondary Performance (cont.)

Enrollment: Class of 2020

(Any Time in Year 1 after HS)

Category	Count	Percent
Total in the Class	1,914	—
Total Enrolled	1,365	71.3
Total in Public	1,190	62.2
Total in Private	175	9.1
Total in 4-Year	835	43.6
Total in 2-Year	530	27.7
Total in-State	1,000	52.2
Total Out-of-State	365	19.1

An additional 68 students were new to college in 2021-22, increasing the total count to 1,433 or 74.9%.

Persistence: Class of 2020

(Freshman to Sophomore)

Category	Count	Percent
Enrolled Anywhere 1 st Year	1,365	71.3
Enrolled Anywhere 2 nd Year	1,181	86.5
In Public 1 st Year	1,190	62.2
Enrolled Anywhere 2 nd Year	1,022	85.9
In Private 1 st Year	175	9.1
Enrolled Anywhere 2 nd Year	159	90.9
In 4-Year 1 st Year	835	43.6
Enrolled Anywhere 2 nd Year	785	94.0
In 2-Year 1 st Year	530	27.7
Enrolled Anywhere 2 nd Year	396	74.7

Violent and Criminal Incidents

- Texas statute requires every school district to publish information on violent and criminal incidents at their schools.
- Incidents include those that occurred while on the premises of a school or while attending a school-sponsored or school-related activity on or off school property.
- Data is used as part of the federal Safe Schools reporting requirements.

Violent and Criminal Incidents (cont.)

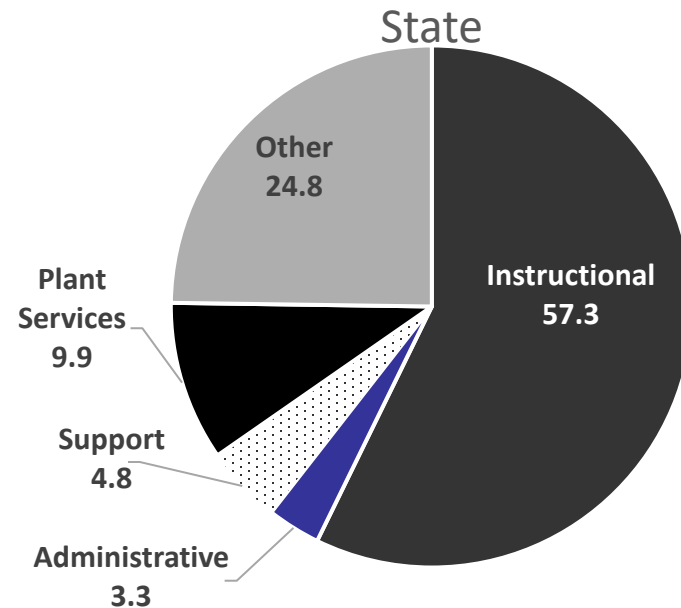
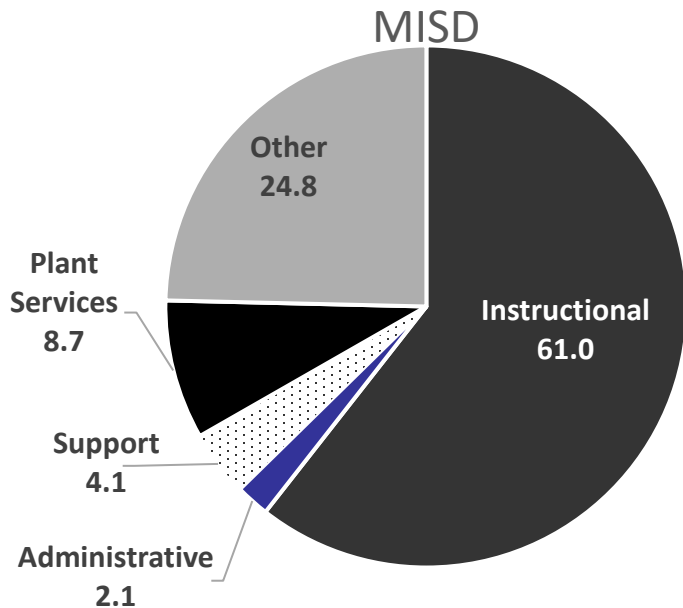
PEIMS 425 Action Reason Codes (as submitted each summer)	Incident Total		
	2019-20	2020-21	2021-22
11 — Used, exhibited, or possessed firearm	1	0	0
12 — Used, exhibited, or possessed an illegal knife	1	1	0
13 — Used, exhibited, or possessed a club	0	0	0
14 — Used, exhibited, or possessed a weapon	0	1	0
16 — Arson	0	0	0
17 — Murder, attempted murder	0	0	0
18 — Indecency with a child	0	0	0
19 — Aggravated kidnapping	0	0	0
28 — Assault of someone other than district staff	22	18	18
29 — Aggravated assault on district employee or volunteer	0	0	1

Violent and Criminal Incidents (cont.)

PEIMS 425 Action Reason Codes (as submitted each summer)	Incident Total		
	2019-20	2020-21	2021-22
30 — Aggravated assault on someone other than district employee or volunteer	0	0	1
31 — Sexual assault or aggravated sexual assault against employee or volunteer	0	0	0
32 — Sexual assault or aggravated sexual assault against someone other than district employee or volunteer	0	1	0
36 — Felony controlled substance violation	19	17	15
37 — Felony alcohol violation	0	0	0
46 — Aggravated robbery	0	0	0
47 — Manslaughter	0	0	0
48 — Criminally negligent homicide	0	0	0

Actual Financial Data: 2020-21 SY

Total Expenditures by Function (as a percent of general operating expenditures)



[Link](#) to PEIMS Financial Standard Reports

Texas Academic Performance Report (TAPR) 2021-22

BOT Regular Meeting
February 28th, 2023